

HAYLEY 9500



Experience the joy of family living in the Hayley 9500. With room for everyone, a well-equipped kitchen, and cozy living spaces, this tiny home offers the perfect setting for creating lasting memories with your loved ones.



SLEEPS
UPTO
4-6

SIZE
HEIGHT: 3300mm
LENGTH: 9500mm
WIDTH: 3000mm

FRAME
90MM
ENGINEERED
STEEL FRAMING

PURPOSE
LONG TERM
ACCOMMODATION,
AIRBNB RENTALS &
FAMILY STAYS

INCLUSIONS

Looking for the ultimate family getaway? Look no further than our remarkable Hayley 9500 tiny home model. Designed to comfortably accommodate 4-6 people, this cozy retreat is the perfect choice for creating timeless memories with your loved ones.

- Suits 4-6 people, ideal for family getaways
- Spacious kitchen and dining room for shared meals
- Large lounge area for relaxation and quality time
- Designed for comfortable living, whether for vacations or full-time residency

With its intelligently designed layout, the Hayley 9500 offers ample space for the whole family. Relax and unwind in the large lounge area, ideal for cozy movie nights or bonding over board games. This tiny home provides a comfortable and inviting atmosphere for everyone to enjoy.

Create mouth-watering meals and share delicious feasts together in the large kitchen and dining room. The well-equipped kitchen boasts plenty of counter and storage space, making meal preparation a breeze. Gather round the dining table to enjoy quality time and create lasting family memories.

Create unforgettable family memories in the perfect family holiday home. With its spacious accommodation, large kitchen and dining area, and comfortable living spaces, this tiny home offers everything you need for a memorable and enjoyable retreat. Embrace the opportunity to live, relax, and spend quality time with your loved ones in the Hayley 9500.

DO YOU WANT TO CUSTOMISE THIS TINY HOME TO SUIT YOU?

One of the biggest advantages of Alphaline Tiny Homes is our ability to customize our designs based on your needs and preferences.

You will be able to work with our experienced design team to create a unique and personalised tiny home that meets your specific requirements.

OPTIONAL UPGRADES:

- > **Solar Panels** > **Battery Packages** > **Decks**
- > **Double Glazing** > **Skylights** > **Stone Benchtops**
- > **Ceiling Fans** > **Window Coverings**
- > **Reverse Cycle Air Conditioning Systems**
- > **Composting Toilets** > **Fireplaces**

IMAGES

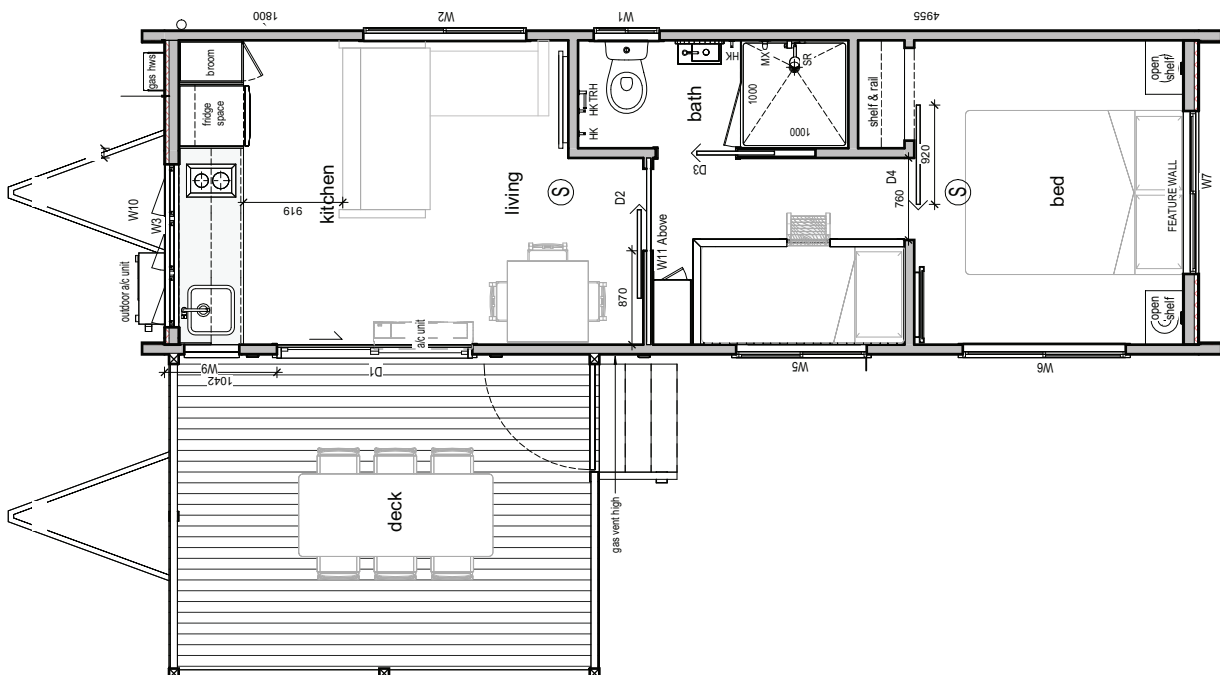
View images - see website for more



Please note: Some pictures may contain upgrades that are not included in standard configuration

FLOOR PLAN

See our standard floor and layout plan



Call us on **1300 584 663** or
visit **www.alphalinetinyhomes.com.au**

 Alphaline **TINY HOMES**
Creating sustainable living