

THE HAMILTON 13000

Indulge in the ultimate luxury getaway with The Hamilton 13000. Designed to comfortably accommodate 4-6 people on the ground floor, this remarkable modular home offers the perfect sanctuary.



SLEEPS
UPTO

4-6

SIZE

HEIGHT: 3300mm
LENGTH: 13340mm
WIDTH: 3810mm

INCLUSIONS

Indulge in the ultimate luxury getaway with The Hamilton 13000. Designed to comfortably accommodate 4-6 people on the ground floor, this remarkable modular home offers the perfect sanctuary for creating timeless memories with your loved ones.

Here's what makes The Hamilton 13000 truly remarkable:

- Spacious accommodation for up to 4-6 people on the ground floor - providing ample space for everyone to relax and unwind.
- A large kitchen and dining room - perfect for creating and sharing delicious meals together, with plenty of counter and storage space for your culinary adventures.
- A generous lounge area - designed to be the heart of relaxation and quality time, ideal for cozy movie nights or bonding over board games.

Designed for both vacations and full-time residency, The Hamilton 13000 ensures comfortable living in a compact space. It offers a welcoming atmosphere and all the necessary amenities for a truly enjoyable experience.

Create unforgettable memories with your loved ones in this perfect family holiday home. From its spacious accommodation to the large kitchen and dining area, every detail is designed to promote togetherness and create lasting family moments.

Embrace the opportunity to live, relax, and spend quality time with your loved ones in The Hamilton 13000 - your ultimate luxury retreat.

FRAME

90MM
ENGINEERED
STEEL FRAMING

PURPOSE

LONG TERM
ACCOMODATION,
AIRBNB RENTALS &
FAMILY STAYS

DO YOU WANT TO CUSTOMISE THIS TINY HOME TO SUIT YOU?

One of the biggest advantages of Alphaline Tiny Homes is our ability to customize our designs based on your needs and preferences.

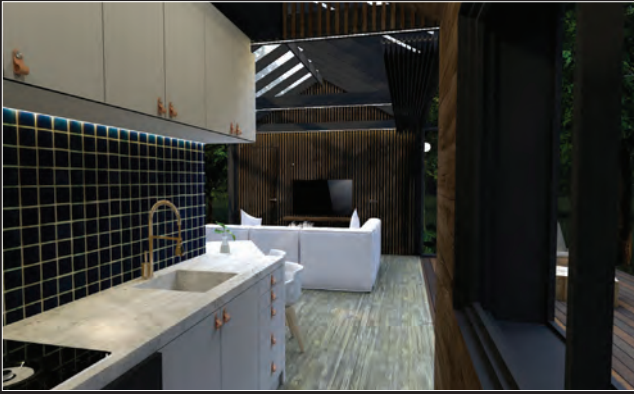
You will be able to work with our experienced design team to create a unique and personalised tiny home that meets your specific requirements.

OPTIONAL UPGRADES:

- > **Solar Panels** > **Battery Packages** > **Decks**
- > **Double Glazing** > **Skylights** > **Stone Benchtops**
- > **Ceiling Fans** > **Window Coverings**
- > **Reverse Cycle Air Conditioning Systems**
- > **Composting Toilets** > **Fireplaces**

IMAGES

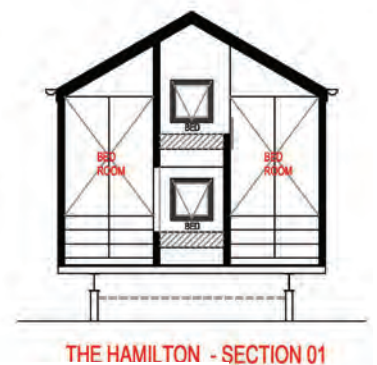
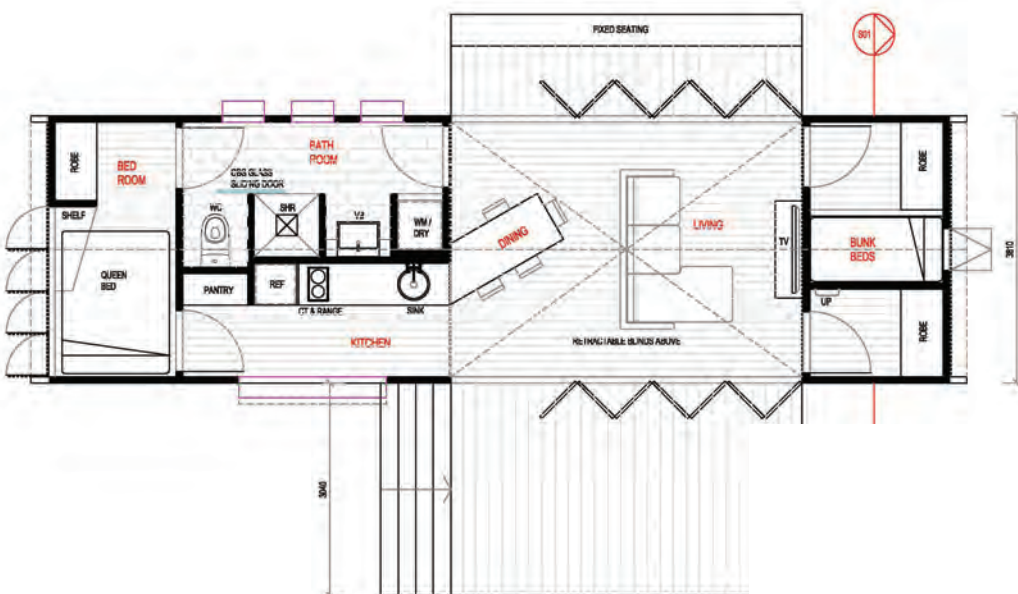
View images - see website for more



Please note: Some pictures may contain upgrades that are not included in standard configuration

FLOOR PLAN

See our standard floor and layout plan



Call us on **1300 584 663** or visit www.alphalinetinyhomes.com.au

Alphaline TINY HOMES
Creating sustainable living